

EXPERT GROUNDWORK FOR THE REGIONAL PUBLIC TRANSPORT SERVICE IN LJUBLJANA URBAN REGION



David Krivec
david.krivec@omegaconsult.si

CONTENTS

-  Vision and objectives of PPT (public passenger transport)
-  PPT plan in Ljubljana region
-  Regional regulatory authority



VISION AND OBJECTIVES OF PPT



- Vision and objectives of PPT
- PPT plan in Ljubljana region
- Regional regulatory authority



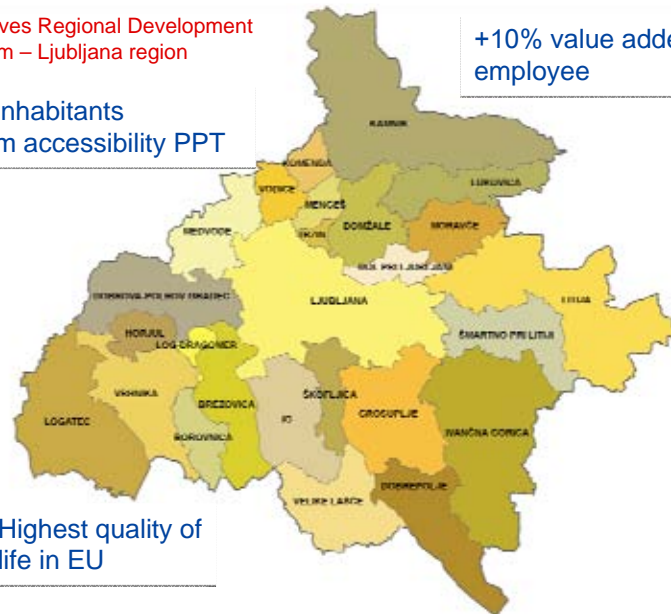
FOUNDATIONS



Objectives Regional Development Program – Ljubljana region

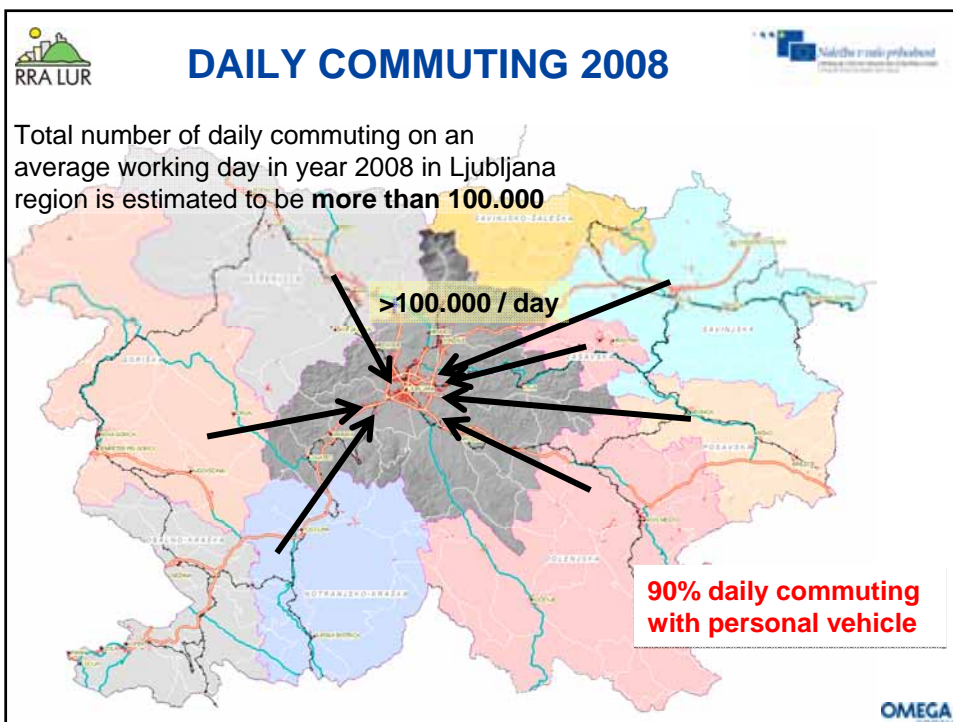
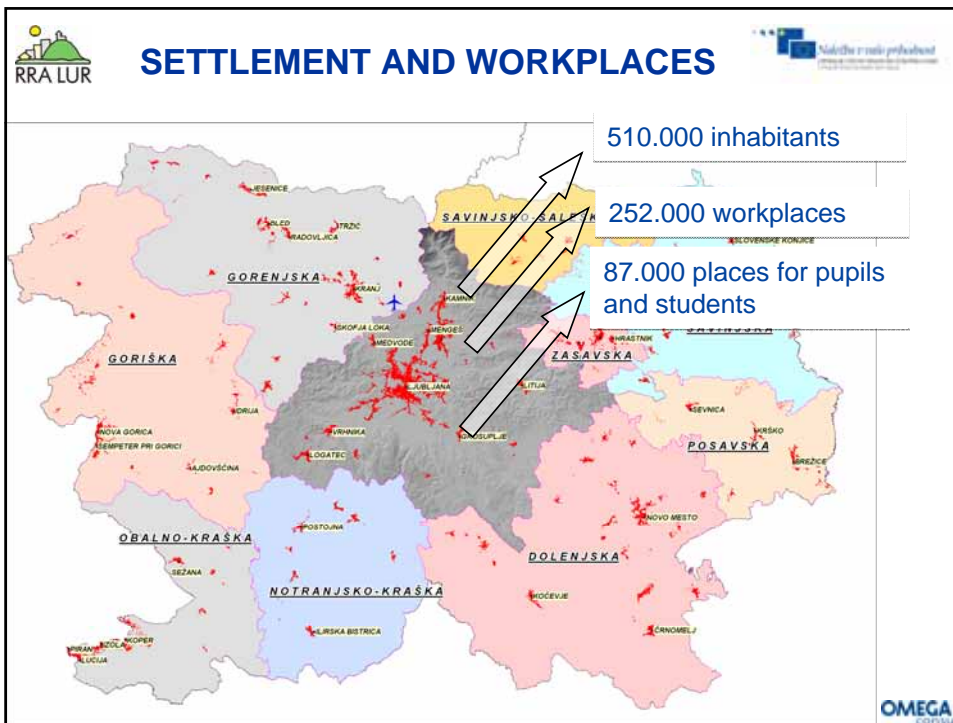
>80% inhabitants
<=300m accessibility PPT

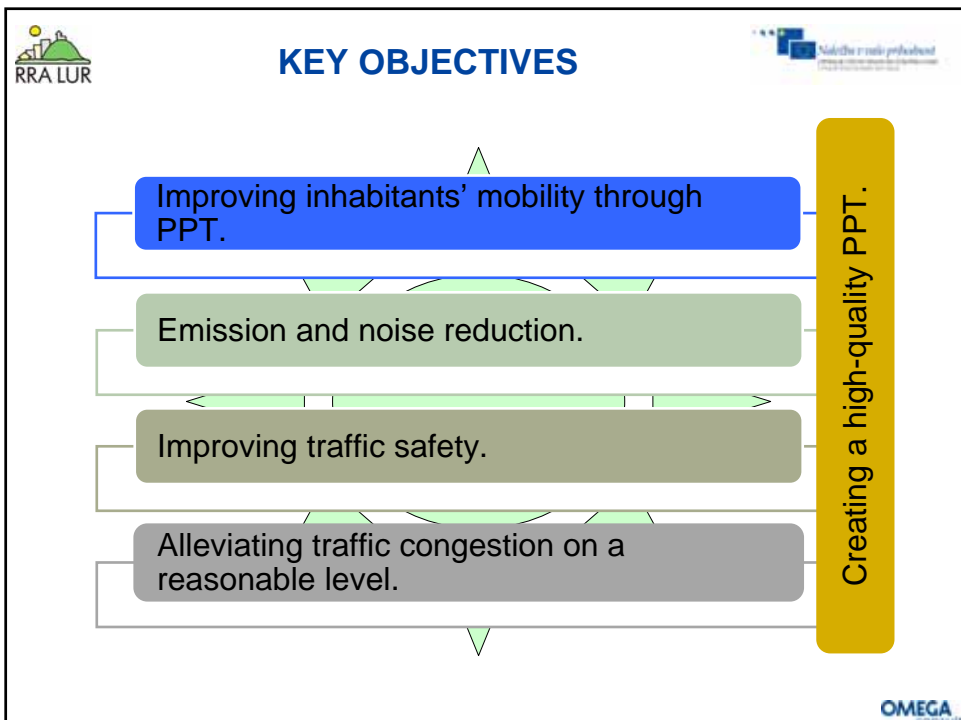
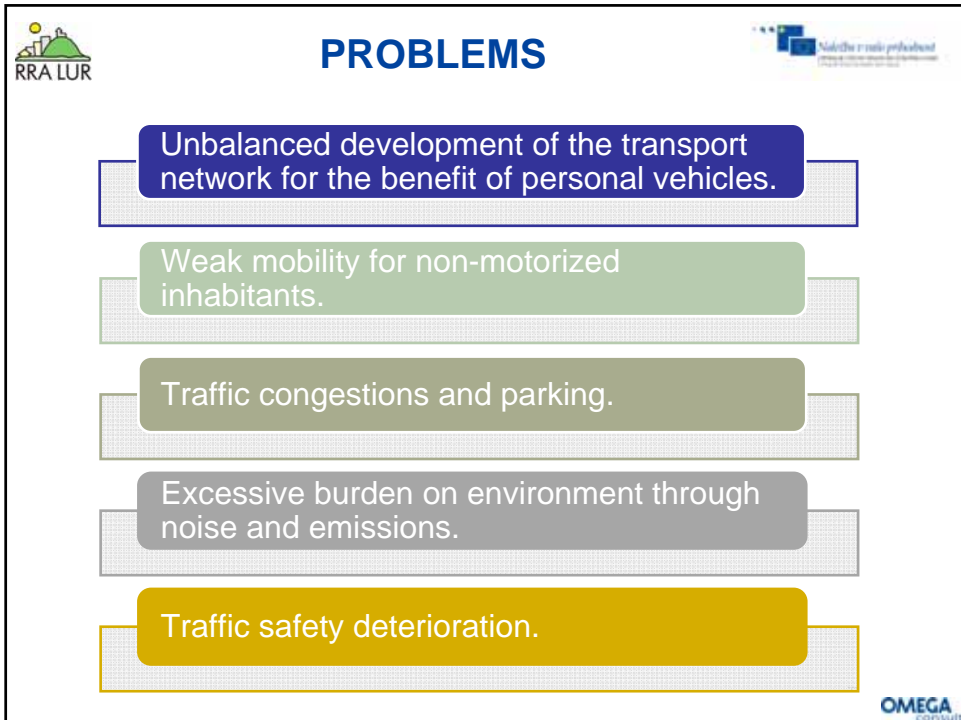
+10% value added per employee



Highest quality of life in EU







RRA LUR Nalobna in razvojna agencija
Ljubljana

PPT PLAN IN LJUBLJANA REGION

Vision and objectives of PPT

PPT plan in Ljubljana region

Regional regulatory authority

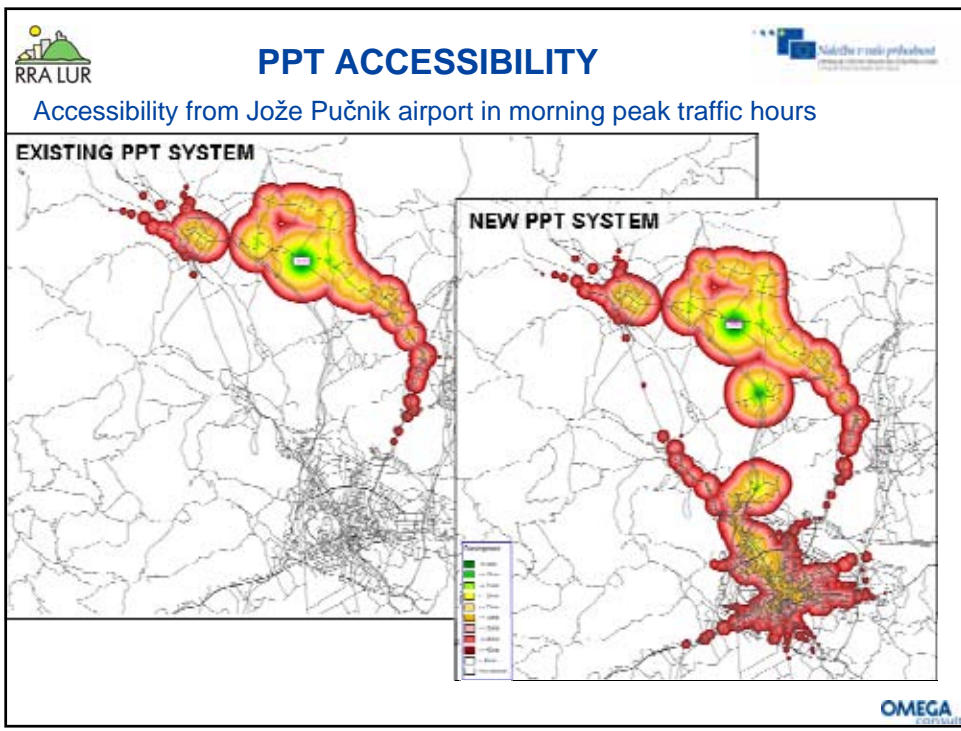
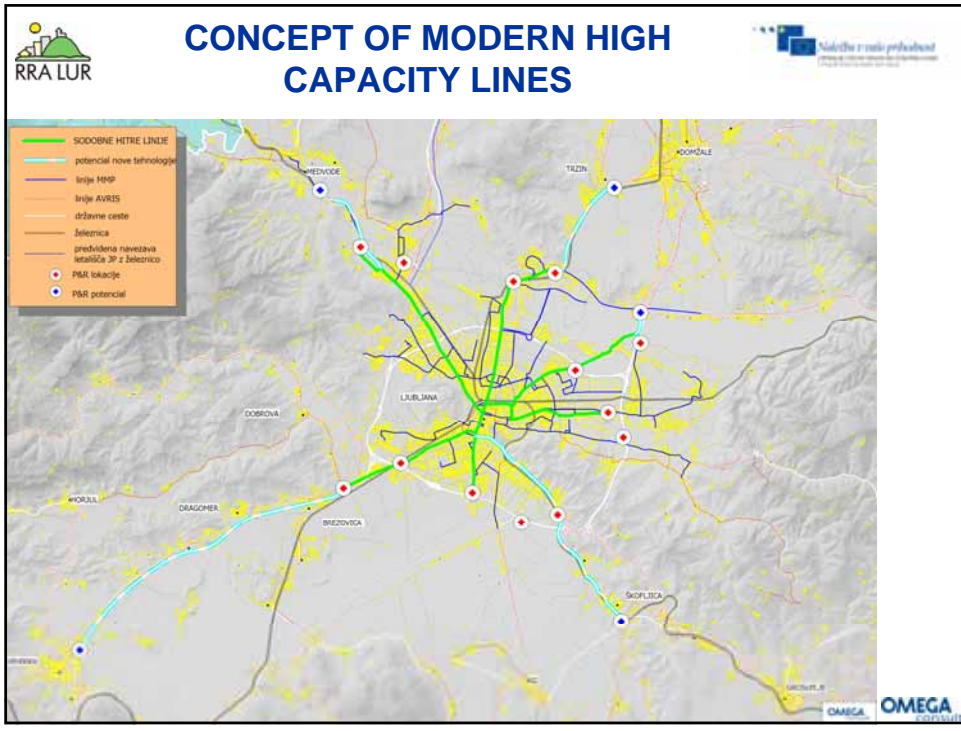
OMEGA
CONSULTING

RRA LUR Nalobna in razvojna agencija
Ljubljana

CONCEPT OF PPT IN LJUBLJANA URBAN REGION

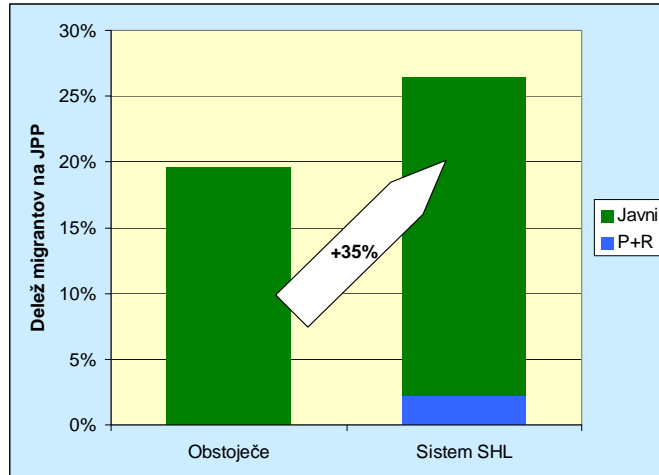
- HCL- frequency 5" in peak hours and travel speed 35km/h
- Intermodal transfer terminal – PPT collector
- Regional connection to intermodal transfer terminals
- Feeding Bus routes to transfer terminals
- Central intermodal terminal in the city center
- Railway network development with fast tracks, regional lines and a new connection past airport

OMEGA
CONSULTING



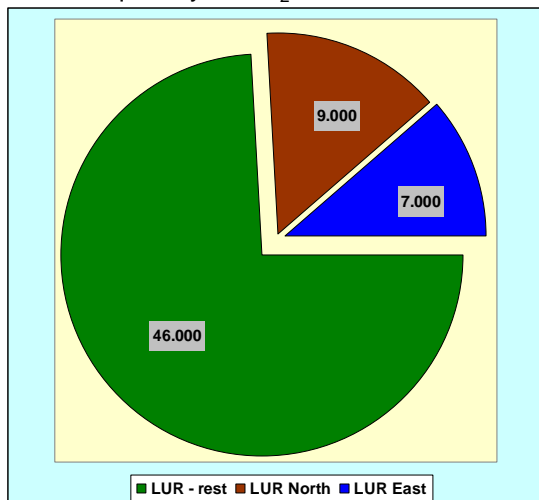
PPT PASSENGERS IN PEAK TRAFFIC HOUR 2008

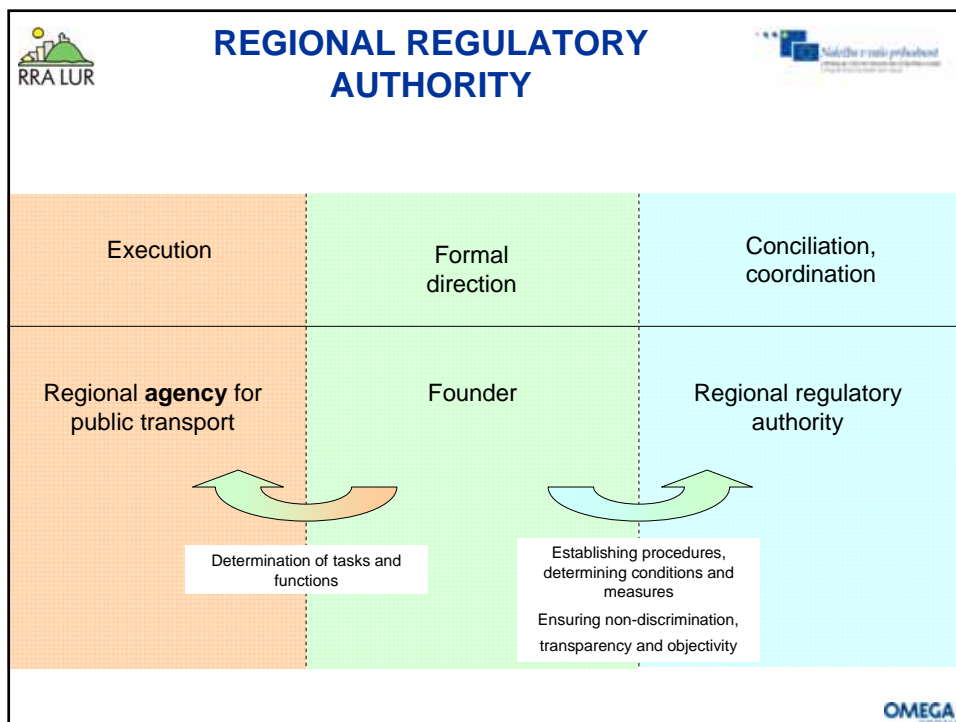
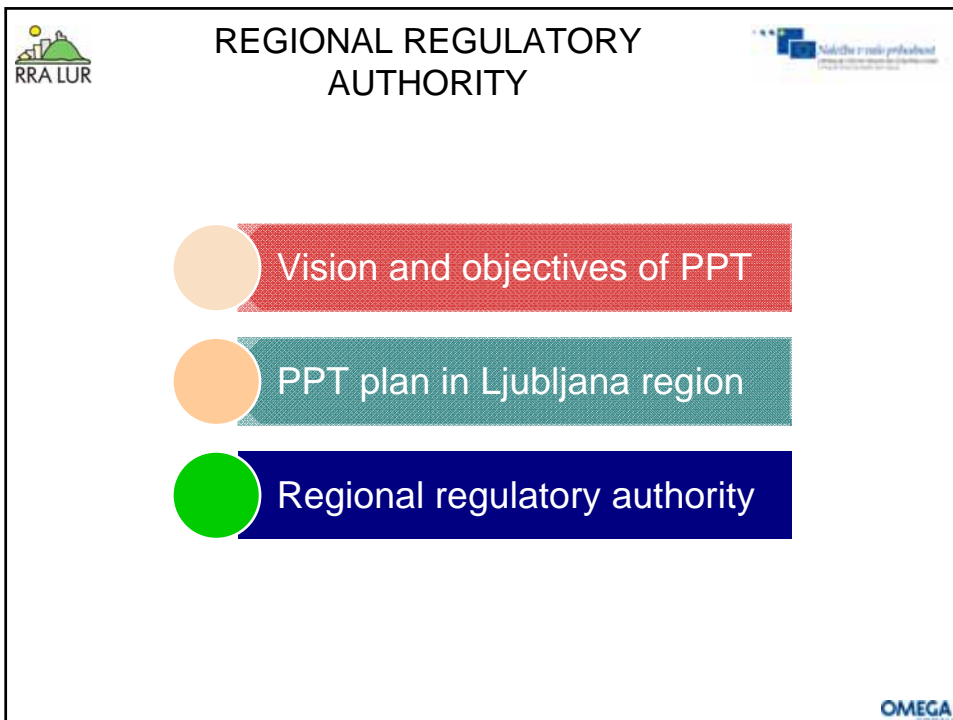
Passengers in morning peak traffic hour on an average working day in year 2008 in Ljubljana region



CO₂ EMISSION SAVINGS

The number of vehicles creating a quantity of CO₂ in one year, same as the saved quantity of CO₂ in 2027





THANK YOU FOR YOUR ATTENTION



OMEGA consult, d.o.o.
Gregorčičeva 7, 1000 Ljubljana
www.omegaconsult.si
01 2000 170